

Anchor Handling Tug Supply Vessel 70 M 10888 BHP 152 MT BOLLARD PULL DP2



PRINCIPAL PARTICULARS

Length Overall	: 70.0 m
Length W.L	: 68.40 m
Breadth Molded	: 16.00 m
Depth Molded	: 6.5 m
Draft Molded	: 5.80 m
Class	: Bureau Veritas
Flag/Port Registry	: Malaysian/Port Klang
Delivery	: October 2011
Official No.	: 334349
IMO No.	: 9610523
Call Sign	: 9MLU2
Hull No.	: 20090
GRT/NRT	: 2320/696
Place of Built	: Muhibbah Marine Eng.

PERFORMANCE

Performance Speed	: Min 13 knots
Economical Speed	: Min 11 knots
Endurance	: Min 25 days

CARGO CAPACITIES

Deck Strength	: 5.5mt/m2
Cargo Deck Area	: 500 m2
Fuel Oil Tank	: 838.40 m3
Drill Water	: 625.90 m3
Fresh Water	: 419.80 m3
Foam Tank	: 14.80 m3
Liquid Mud / Brine Tank	: 324.30 m3
Base Oil Tank	: 216 m3
Cement Tank	: 2 x 2375 CUF and 2 x 1750 CUF

DISCHARGE RATE

Fuel Oil Cargo Pump	: 2 x 100 m3/Hr @ 90m head
Fresh Water Cargo Pump	: 1 x 100 m3/Hr @ 90m head
Drill Water Cargo Pump	: 1 x 100 m3/Hr @ 90m head
Liquid Mud/Brine Pump	: 2 x 100 m3/Hr @ 90m head
Brine Cargo Pump	: 1 x 100 m3/Hr @ 90m head
Base Oil Cargo Pump	: 1 x 100 m3/Hr @ 90m head

PROPULSION SYSTEM

Main Engines	: 2 x 5444 BHP (10,888 BHP) Caterpillar C28012
Bow Thruster	: 1 x 10T Motor Driven CPP Tunnel Thrusters 3 x 12T Retractable Azimuth Thrusters, Engine Driven
Stern Thrusters	: 1 x 10T Motor Driven CPP Tunnel Thrusters
Propellers	: 2 x CPP
Shaft Alternator	: 2 x 1250 kW, 415/3 phase/50Hz Stamford
Auxiliary Generator	: 2 x 450 kW, 415/3 phase/50Hz CAT C18
Emergency Generator	: 1 x 82 kW, 415/3 phase/50Hz CAT 4.4

TOWING / ANCHOR HANDLING EQUIPMENT

Bollard Pull	: Average 152 MT, Max 158 MT
Towing Winch	: Double drums waterfall type, 200 MT stall pull x 1000m x 58mm wire rope
Stern Roller	: 2.0 m dia x 4.0 m length, SWL 450 mt
Karm Fork	: 1 set Karmoy Ref: M330120 SWL 300 tones
Towing Pins	: SWL 160 MT
Storage Reel	: 1 x 5 ton @ C-20m/min

DECK EQUIPMENT

Capstan	: 2 x 10T @ 25 m/min
Tugger Winch	: 2 x 16.90T @ 27.5Tm/min
Deck Crane	: Type AT8 58/8 5 MT @ 8m outreach
Anchor Windlass	: 10T @ 0-12 m/min max duty, 45mm chain
Anchor	: 2 x HHP AC14 1590kg Anchors

ACCOMMODATIONS

Complement	: 42 men
All cabin fully air-conditioned	
Walk-in freezer space	: 10.0 m3
Walk-in Chiller	: 12.0 m3

RADIO & NAVIGATION EQUIPMENTS

SSB	: 1 x JRC 150W MF/HF
SSB (additional)	: 1 x Furuno PS-1503 150W SSB/HF
VHF	: 2 x JRC-7705
Radar	: JRC, JMA-5312-6, 5210-6
Echo Sounder	: JRC, JFE-380
Gyro Compass	: Yokogawa CM2 700B M 3
GMDSS	: Area 3
Magnetic Compass	: 1 x Lilley & Gillie MK2000
Speed Log	: 1 x JRC, IJL-205
Auto Pilot	: 1 x Navitron PID, NT991G MKII
Navtex Receiver	: JRC, NCR-333
GPS Navigator	: 2 x JRC, NW2-4570
Joystick	: 1 Integrated Joystick Control
EPIRB	: 1 set JME MT403FF
AIS	: 1 x JRC, IHS-182
Fleet Broadband	: 1 set Thrane & Thrane F88 250

LIFE SAVING & H.S.E. EQUIPMENTS

Search Lights	: 2 x 2000W halogen
Floodlights	: 6 x 1000W halogen, 2 x 500W halogen
Life Jackets	: 42 + 6 men
Liferaths	: 4 x 15 men capacity
Lifebuoys	: 3 pcs SOLAS approved
Firemen Suits	: As per SOLAS requirement
Immersion Suits	: As per SOLAS requirement
Scrambling Net	: 2 pcs
Rescue Boat	: semi-rigid "Narwal" 6 person @ c/w 25 hp outboard motor As per SOLAS requirement
Slewing Devit	: As per SOLAS requirement

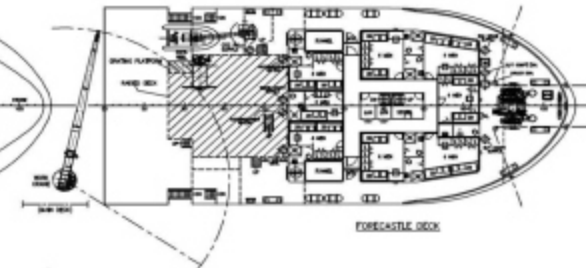
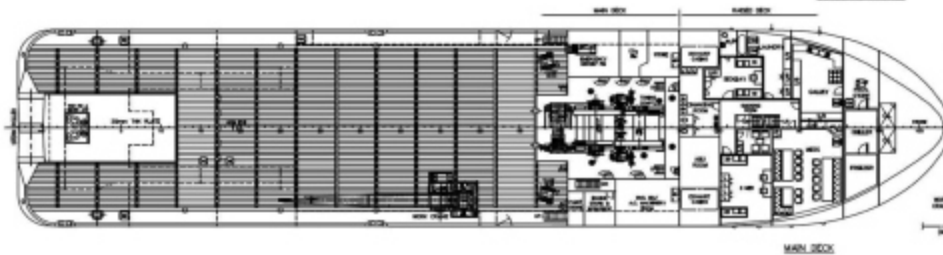
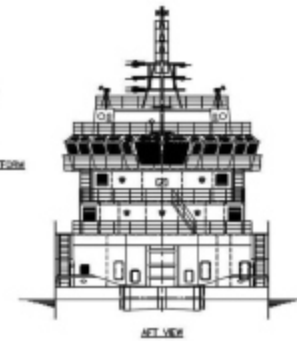
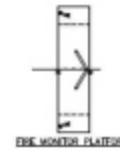
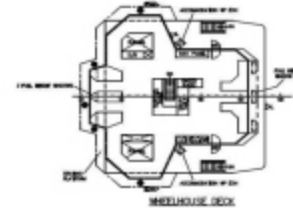
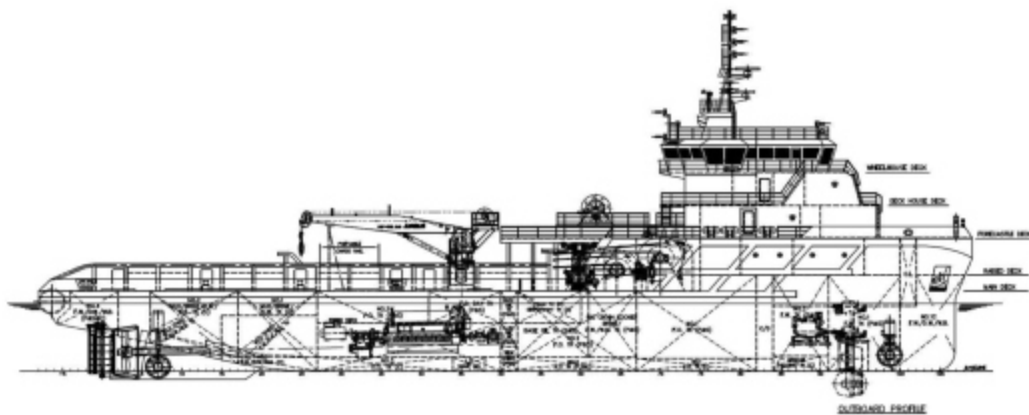
AUXILIARY MACHINERIES

G.S and Bre pump	: 1 x 60 m3 hr @ 60 mH, 18.5 kW Bombass Azcue BA WM-EM
Bilge and Ballast	: 1 x 60 m3 hr @ 60 mH, 18.5 kW Bombass Azcue BA WM-EM
Lub Oil Purifier	: 2 x 800 l/h, Mitsubishi Kaisha, Model S11-G self-cleaning
Sewage Treatment Plant	: DY2, 30 men, marpol compliance
Oily Water Separator	: 1.0 m3, marpol compliance

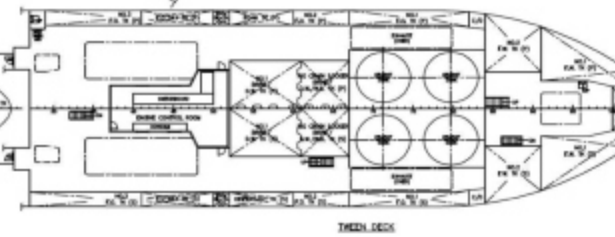
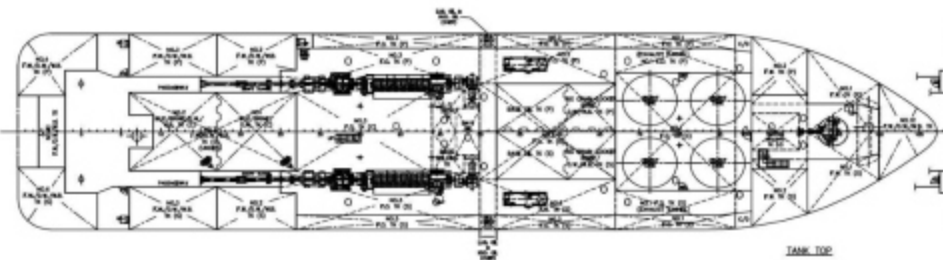
OTHERS

Reefer points	: 4 x 22 amp 415/3/50Hz 4 x 16 amp 240V/1/50Hz
---------------	---

JM SETIA GENERAL ARRANGEMENT PLAN



PRINCIPAL PARTICULARS
 LENGTH O.A. 70.00m
 LENGTH B.P. 64.10m
 BEAM MLD. 16.00m
 DEPTH MLD. 6.50m
 DRAFT DESIGNED/ICANTOP 5.50m/7.80m
 COMPLIMENT 42 MEN



NO.	DESCRIPTION	UNIT
1	70m A.H./OFFSHORE SUPPORT VESSEL	
General Arrangement		
DESIGNED BY: CONAN WU & ASSOCIATES		
DRAWN BY: CONAN WU & ASSOCIATES		
CHECKED BY: CONAN WU & ASSOCIATES		
DATE: 2011/08/01		
PROJECT: 70m A.H./OFFSHORE SUPPORT VESSEL		
SCALE: 1:100		
DRAWING NO: C4133A/G-1		