

# MV JM SERI BESUT

Anchor Handling Tug Supply Vessel  
59.20 M 5,444 BHP 76 MT Bollard Pull



## PRINCIPAL PARTICULARS

Length Overall	: 59.20 m
Breath Molded	: 13.80 m
Depth Molded	: 5.50 m
Design Draft	: 4.75 m
Class	: BV - Unrestricted services
Flag/Port Registry	: Malaysian/Port Klang
Built	: 2008
Official No.	: 332499
IMO No.	: 9430557
MMSI No.	: 533000479
GRT / NRT	: 1223 / 367
Call Sign	: 9MH59
Hull No.	: 20065
Place of Built	: Muhibbah Marine Eng

## PERFORMANCE

Performance Speed	: 14 knots
Economical Speed	: 10 knots
Type of Fuel	: MGO
Endurance	: 23 days

## CARGO CAPACITIES

Deck Cargo	: 500 MT
Deck Strength	: 5 mt/m <sup>2</sup>
Clear Deck Area	: 10M x 34M (covered 76mm thick hardwood)
Fuel Oil	: 470 m <sup>3</sup>
Potable / Drill Water	: 400 m <sup>3</sup>
Dirty Oil Tank	: 12 m <sup>3</sup>
Foam & Detergent Tank	: 11 m <sup>3</sup> each
Bulk Cement Tank	: 136 m <sup>3</sup> / 4 tanks
Mud Tank	: 160 m <sup>3</sup> / 1000 bbls
Saraline / Mentor 26	: 227 m <sup>3</sup> / 1400 bbls

## DISCHARGE RATE

Fuel Oil	: 100 m <sup>3</sup> /Hr @ 60 m H
Potable Water Drill	: 100 m <sup>3</sup> /Hr @ 60 m H
Bulk Cement	: 75 m <sup>3</sup> /Hr @ 60 m H
Saraline Pump	: 95 m <sup>3</sup> /Hr @ 60 m H
Liquid Mud Pump	: 95 m <sup>3</sup> /Hr @ 60 m H

## PROPULSION SYSTEM

Main Engines	: 2 x 2722 BHP @ 1000 rpm CAT 3606 DITA
Generator Engines	: 3 x CAT 3406, 3 x 260 kW
Bow Thruster	: 1 x HRP5110 50, 720 BHP, 6mt Thrust D/E driven
Propellers	: 2 x Berg Type BCP 620 x 2600mm DIA
Steering Gear	: Palmarine TYPE PEH 8002/2pin 4mT/T

## DECK EQUIPMENT

Capstan	: Zicom, 2 x 5mt @ 0.15m/min Brake Holding Load: 15 ton
Tugger Winch	: Zicom, 2 x 12mt @ 25m/min Brake Holding Load: 15 ton
Crane	: Foldable type AK40 E2, 3mt @ 9 m
Anchor Windlass	: Zicom, 9 tonnes @ 12 m/min for 36 mm chain @ 17 shackles
Anchor	: 2 x 1440 kg Stockless bower anchor
Hydraulic Storage	: Zicom, 5 tonnes @ 20m/min @ 1st layer

## FOR CHARTER INQUIRIES

Tel : +609 8511 1100

Fax : +609 858 9258

Email : commercial@jasamerin.com.my

## TOWING / ANCHOR HANDLING EQUIPMENT

Bollard Pull	: Average 76 MT, Max.84 MT
Towing Winch	: Zicom Double Drum Waterfall Type 150T stall pull 1000m of 58mm wire
Stern Roller	: 1.5m dia x 3.5 length 200 tons SWL
Karm Fork	: 1 x Zicom SWL 300 tons
Towing Pins	: 1 set Zicom SWL 180 tons
Storage Reel	: 1 x 5 ton @ 0.20m/min

## ACCOMMODATIONS

Crews	: 15 crews & 12 passengers
Total	: 27
All cabin fully air-conditioned	: 2 x 162 m <sup>3</sup> /hr x 1450 rpm, Bitzer
Walk-in freezer space	: 11.0 m <sup>3</sup>
Walk-in Chiller	: 16.5 m <sup>3</sup>

## RADIO & NAVIGATION EQUIPMENTS

SSB	: 1 x Furuno FS-1570
SSB (additional)	:
VHF	: 2 x ICOM M45, 55 ITU, 25w
Radar	: 2 x Furuno FR-2115 & FR-1505 Mark k-3
Echo Sounder	: 1 x Furuno FE-700 6.5 inch
Gyro Compass	: 1 x Yokogawa, model CMZ 700B
GMDSS	: Furuno, FM 880DS, 25w for A3
Magnetic Compass	: 1 set x Lilley & Gillie MK2000
Speed Log	: 1 x Furuno, DS-80, -10 to 40 kts
Auto Pilot	: 1 set Navitron PID, Model NT990G
Navtex Receiver	: 1 x Furuno NX-700B
GPS Navigator	: 1 x Furuno FP-90
Joystick Control System	: 1 x Kongsberg Maritime
EPIRB	: 1 x McMurdo, model E3
Fleet Broadband	: 1 set Thrane & Thrane FBB 250

## LIFE SAVING & H.S.E. EQUIPMENTS

Search Lights	: 2 x 2000W Danyang Series 1900
Floodlights	: 5 x 1000 watts
Life Jackets	: 34
Liferafts	: 4 x 16 men DSB
Lifebuoys	: 9 pcs (5+2+2)
Firemen Suits	: 6 sets DOT approved
Immersion Suits	: 1 set
Scrambling Net	: 1 pc
Rescue Boat	: DSB 4201RB 6 persons c/w 25hp Outboard Motor
Slewing Davit	: 0-CRM SWL 10 kN 3.5 m reach
Emergency Fire Pump	: 1 x 65 m <sup>3</sup> /hr @ 60 m H, Bombas Azcue

## FIRE FIGHTING EQUIPMENTS

External	
Fire Pump(M/E Driven)	: 2x 1500 m <sup>3</sup> /hr, Jason Eureka
Fire Monitor	: 2 monitors (water & foam) 1200 m <sup>3</sup> /hr Model MM602HF2-V-C-01
Oil Dispersant Boom	: 2 x Booms 3 m <sup>3</sup> /hr
Internal	
CO2 System	: Installed as per class requirement
in Engine Room	

## OTHERS

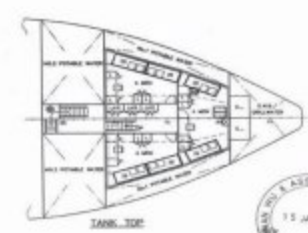
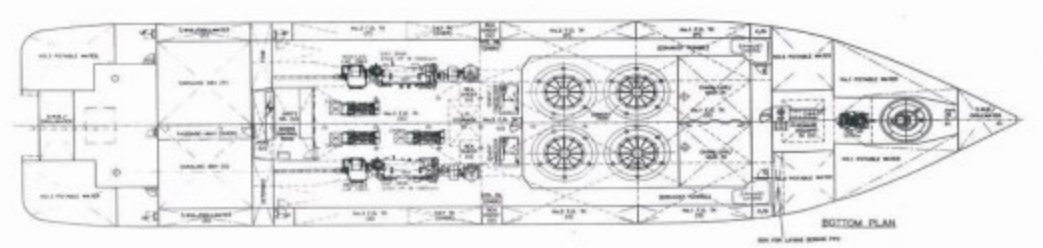
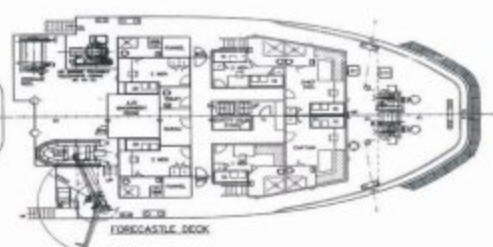
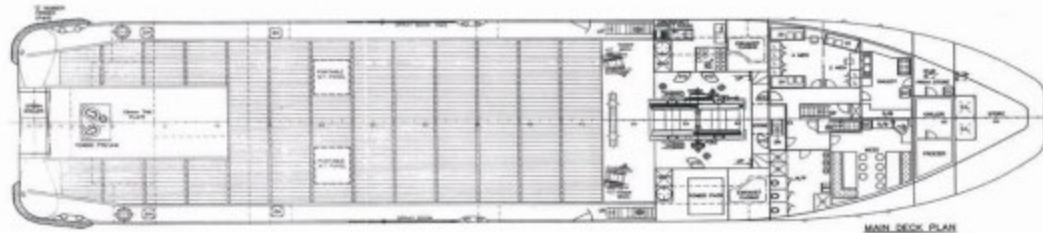
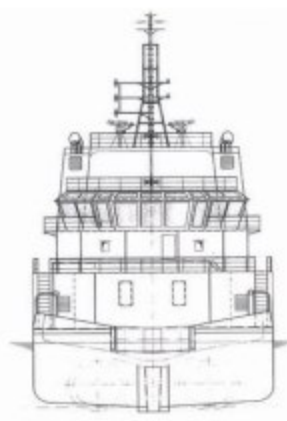
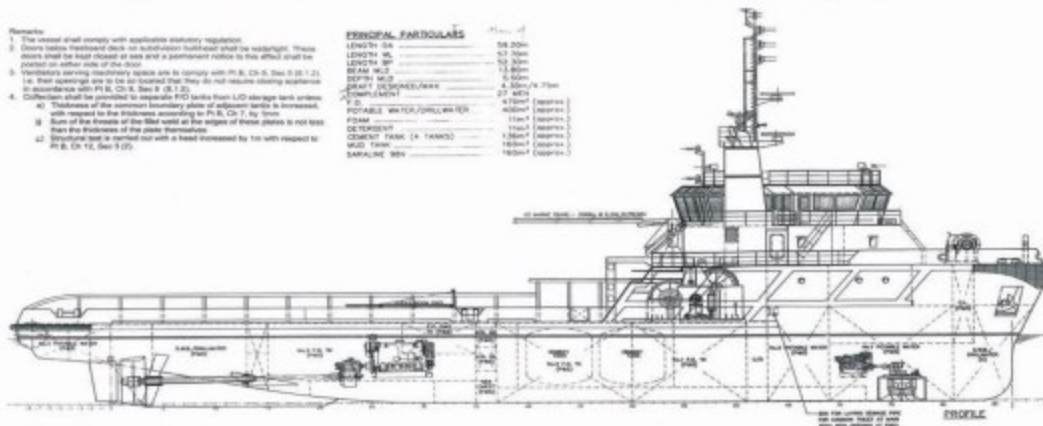
Reefer points	: 8 x 16 amp 415/3/50Hz, 4 pin
Unitar Arc Welding & Oxy-acetylene gas	
Emergency Generator	: 1 x 75 kW, CAT C4.4 DITA @ 1500 rpm
Sewage Treatment Plant	: 1 x DV2 SKA 30 cap for 27 mens
Fuel Oil Purifier	: 1 x 2900 l/hr of MDO at 14cst/40 deg C Mitsubishi S110G, self cleaning
G S & Fire Pump	: 1 x 60 m <sup>3</sup> /hr @ 60 m H, Bombas Azcue
Blige & Ballast Pump	: 1 x 60 m <sup>3</sup> /hr @ 60 m H, Bombas Azcue

www.jasamerin.com.my

# JM SERI BESUT GENERAL ARRANGEMENT PLAN

- Remarks:
- The vessel shall comply with applicable statutory regulations.
  - Owners to ensure that the vessel is built in accordance with the applicable regulations. These plans shall be kept aboard at sea and a permanent notice to this effect shall be posted on either side of the deck.
  - Dimensions of machinery spaces are to comply with P.I.B. Ch. 9, Sec. 2 (2) 1.1.1.1. Their openings are to be so located that they do not require closing appliances in accordance with P.I.B. Ch. 9, Sec. 2 (2) 1.1.1.2.
  - Collisions shall be provided to separate PFD tanks from LLD storage tank unless with respect to the thickness according to P.I.B. Ch. 7, by 1mm.
  - Bottom of the frames of the flat coffer at the edges of these plates is not less than the thickness of the plate themselves.
  - Structural steel members not with a head increased by 1in with respect to P.I.B. Ch. 13, Sec. 9 (2).

PRINCIPAL PARTICULARS	
LENGTH OA	58.00m
LENGTH WL	57.00m
LENGTH BP	55.00m
BEAM WL	11.80m
DEPTH MLD	5.50m
DRAUGHT DECK/TANK	4.50m/4.75m
COMPLEMENT	27 MEN
GROSS TONNAGE	420m <sup>3</sup> (approx)
POTABLE WATER/CHILLER	110m <sup>3</sup> (approx)
DETERGENT	150m <sup>3</sup> (approx)
GREASE TANK (X 2 TANKS)	1.8m <sup>3</sup> (approx)
MUD TANK	180m <sup>3</sup> (approx)
SARFALINE 50%	180m <sup>3</sup> (approx)



JM SERI BESUT	
BULL NO. 28065	
DATE	15 JAN 2007
BY	CONAN WU & ASSOCIATES
50m ANCHOR HANDLING TUG/SUPPLY VESSEL	
General Arrangement	
CONAN WU & ASSOCIATES	
MARINE ARCHITECTS	
15 JAN 2007	
C4040A/G-1	