

# MU JM PERMAI

**Anchor Handling Tug Supply Vessel**  
**60 M S,220 BHP 74 MT Bollard Pull DP1**



## PRINCIPAL PARTICULARS

Length Overall	: 60.0 m
Breath Molded	: 16.00 m
Depth Molded	: 5.5 m
Class	: Bureau Veritas
Flag/Port Registry	: Malaysian/Port Klang
Built	: 2012
Official No.	: 334388
IMO No.	: 9626649
GRT / NRT	: 1669 / 500 MT
Call Sign	: 9MPL4
Hull No.	: 20094
Place of Built	: Muhibbah Marine Eng

## PERFORMANCE

Performance Speed	: 13 knots
Economical Speed	: 11 knots
Endurance	: 22 days

## CARGO CAPACITIES

Deck Cargo	: 600 MT
Deck Strength	: 7 mt/m <sup>2</sup>
Cargo Deck Area	: 390 m <sup>2</sup>
Fuel Oil	: 522 m <sup>3</sup>
Potable Water Tank	: 500 m <sup>3</sup>
Drill Water / SWB Tank	: 626 m <sup>3</sup>
Foam & Detergent Tank	: 10 m <sup>3</sup> each
Dry Bulk Tank	: 170 m <sup>3</sup> / 4 tanks
Mud Tank	: 177 m <sup>3</sup>
Base Oil / Brine	: 159 m <sup>3</sup>

## PROPULSION SYSTEM

Main Engines	: 2 x 2610 BHP @ 750 rpm Yanmar 6EY26
Auxiliary Engines	: Caterpillar 3406 DITA, 2 x 245 kW x 415V x 3pH x 1500 rpm
Shaft Alternator	: Leroy Somer, 2 x LSA M50, 154 4P, 700 kW 50 Hz
Bow Thruster (Electric)	: 1 x HRP 4008 TTCP 8 mt thrust, 515 kW, 1500 rpm
Gear Box	: Reintjes, LAF 2346 K41
Steering Gear	: Wagner Nuffis Steering System, WIN LA2 4.4-45-CB2
Emergency Generator	: 1 x Caterpillar, 86kW, 415 V 3 ph, 50 Hz @ 1500 rpm

## DISCHARGE RATE

Fuel Oil	: 100 m <sup>3</sup> /Hr @ 90 m H
Potable Water Drill	: 100 m <sup>3</sup> /Hr @ 90 m H
Base Oil	: 100 m <sup>3</sup> Hr @ 90 m H
Liquid Mud	: 2 x 90 m <sup>3</sup> / Hr @ 90 mH 150hp x 2900 rpm for S.O 2.0
Bulk Cement	: 13.0 m <sup>3</sup> /min, normal working pressure 5.6 bar
Fresh Water Maker	: 5.5 m <sup>3</sup> /24hrs (240 lit/hr)

## DECK EQUIPMENT

Capstan	: 2 x 6T @ 20 m/min
Tugger Winch	: 2 x 10T @ 15m/min
Crane	: Type ATB 58/B 5 MT @ 8m outreach
Anchor	: 2 x HHP AC14 1590kg Anchors

## ACCOMMODATIONS

Crews	: 46 men
All cabin fully	air-conditioned
Walk-in freezer space	: 10.0 m <sup>3</sup>
Walk-in Chiller	: 12.0 m <sup>3</sup>
<b>RADIO &amp; NAVIGATION EQUIPMENTS</b>	
SSB (additional)	: 1 x JRC 150W MF/HF
VHF	: 2 x JRC-7705
Radar	: JRC,JMA-5312-6, 5210-6
Echo Sounder	: JRC, JFE-380
Gyro Compass	: Yokogawa CM2 700B M
GMDSS	: Area 3
Magnetic Compass	: 1 x Lilley & Gillie MK2000
Speed Log	: 1 x JRC, JLN-205
Auto Pilot	: 1 x Navitron PID, NT991g MKII
Navtex Receiver	: JRC, NCR-333
GPS Navigator	: 2 x JRC, NW2-4570
Joystick Control System	: 1 Integrated Joystick Control System
EPiRB	: 1 x set GME MT403FF
AIS	: 1 x JRC, JHS-182
Telecommunication	: 1 x VSAT & 1 x Fleet Broadband 250

## LIFE SAVING & H.S.E. EQUIPMENTS

Search Lights	: 2 x 2000W halogen
Floodlights	: 6 x 1000 halogen
Life Jackets	: 46 + 6 men
Liferafts	: 6 x 25 men & 2 x 15 men
Lifebuoys	: 3 pcs SOLAS approved
Firemen Suits	: As per SOLAS requirement
Immersion Suits	: As per SOLAS requirement
Scrambling Net	: 2 pcs
Rescue Boat	: 1 x "Narwhal" 6 person c/w 30 hp outboard motor

## Slewing Davit

: As per SOLAS requirement

## FIRE FIGHTING EQUIPMENTS (PIPI Class I)

### External

Fire Pump	: Kvaerner, 2 x 1500 m <sup>3</sup> hr. main main engine driven
Fire Monitor	: 2 monitors (water & foam, manual and remote control)
Oil Dispersant Boom	: 2 x 6m spray boom

### Internal

CO2 System	: Fitted
In Engine Room	
Gas Detection System	: Fixed

## TOWING / ANCHOR HANDLING EQUIPMENT

Bollard Pull	: Average 74 MT, Max 75 MT
Towing Winch	: Double drums waterfall type, 200 mt stall pull x 1000m x 58mm wire rope
Stern Roller	: 1.8 m dia x 4.0 m length, 200 SWL
Kern Fork	: 1 set Karmony Ref: M330120
Towing Pins	: SWL 160 mt
Storage Reel	: 1 x 5 ton @ 0-20mm/min

## OTHERS

Reester points	: 4 x 22 amp 415/3/50/Hz 4 x 16 amp 240V/1/50Hz
----------------	--

## DP1 DYNAMIC POSITIONING SYSTEM

DP System	: Kongsberg DP1 Dynapos AM 2 x Kongsberg Differential Position System 2 x Kongsberg Motion Reference Unit 2 x Wind Sensor 1 x Digital Gyro Compass 1 x UPS
	: 1 x cPos Operator Console & Station

FOR CHARTER INQUIRIES

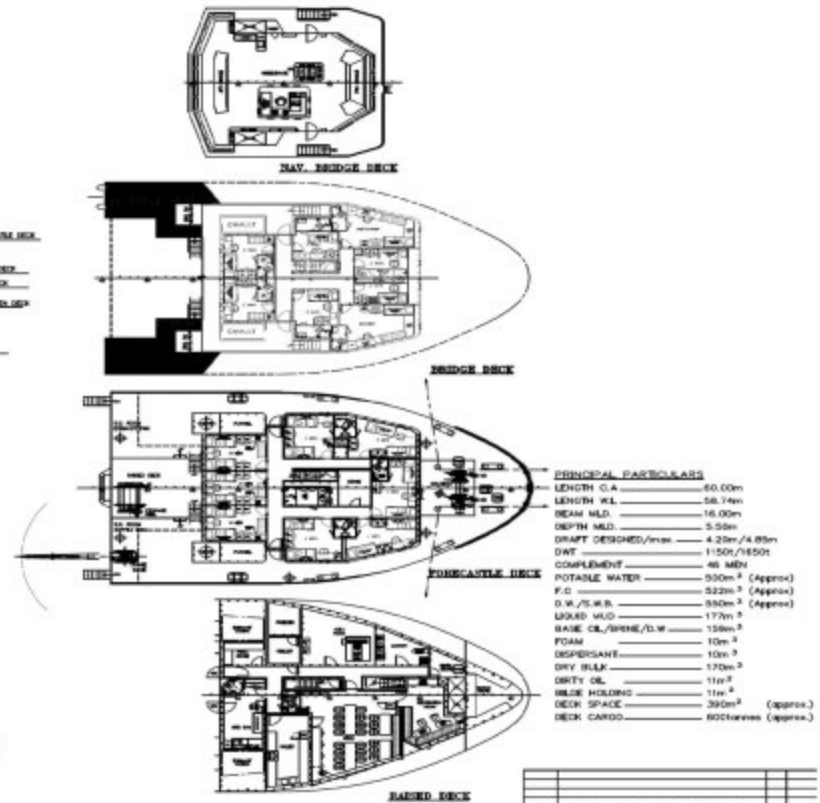
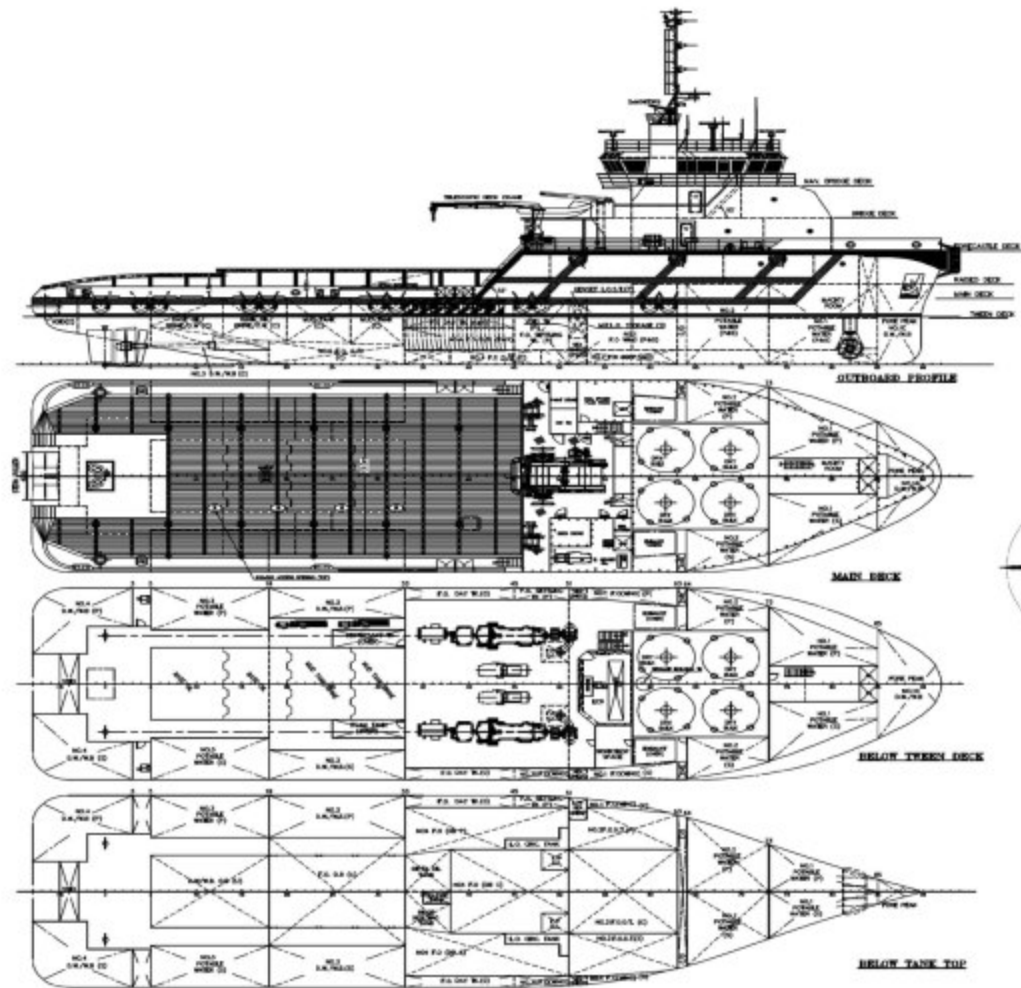
Tel : +609 8511 1100

Fax : +609 858 9258

Email : commercial@jasamerin.com.my

www.jasamerin.com.my

# JM PERMAI GENERAL ARRANGEMENT PLAN



**PRINCIPAL PARTICULARS**

LENGTH O.A.	60.00m
LENGTH W.L.	56.74m
BEAM M.D.	16.00m
DEPTH M.D.	5.50m
DRAFT DESIGNED/over	4.25m/4.85m
DWT	1150t/1850t
COMPLEMENT	46 MEN
POTABLE WATER	500m <sup>3</sup> (Approx)
P.O.	322m <sup>3</sup> (Approx)
D.W./S.W.B.	300m <sup>3</sup> (Approx)
LIQUID MUD	177m <sup>3</sup>
BASE OIL/SPRUE/D.W.	150m <sup>3</sup>
FOAM	10m <sup>3</sup>
COFFEINANT	10m <sup>3</sup>
DRY BULK	170m <sup>3</sup>
CRITY OIL	11m <sup>3</sup>
MUDE HOLDING	11m <sup>3</sup>
DECK SPACE	390m <sup>2</sup> (Approx.)
DECK CARGO	600cubes (Approx.)

NO.			
DATE			
<b>80m ANCHOR HANDLING/SUPPLY VESSEL</b>			
<b>General Arrangement</b>			
DESIGN	CONAN WU & ASSOCIATES		
SCALE	AS SHOWN		
<b>CONAN WU &amp; ASSOCIATES</b>			
MARINE ARCHITECTS			
NO. 12, JALAN PERAK, 50450 KUALA LUMPUR, MALAYSIA			
TELEPHONE: (603) 26133333 FAX: (603) 26133333			
E-MAIL: CONAN@CWASIA.COM WEBSITE: WWW.CONANWU.COM			
DRAWN BY: [Signature] CHECKED BY: [Signature]			
DATE: 11/10/2011 SCALE: 1:150 [C3865J/G-1] A			