



Straight Supply Vessel 59.20 M 4,640 BHP



PRINCIPAL PARTICULARS

Length Overall	: 59.20 m
Breadth Molded	: 13.80 m
Depth Molded	: 5.50 m
Design Draft	: 4.75 m
Class	: Bureau Veritas
Flag/Port Registry	: Malaysian/Port Klang
Built	: 2007
Hull No.	: 20061
Official No.	: 332359
IMO No.	: 9410351
Call Sign	: 9MFC7
MMSI No.	: 533000476
GRT / NRT	: 1212 / 363
Place of Built	: Muhibbah Marine Eng. Sdn. Bhd.

PERFORMANCE

Performance Speed	: 14 knots
Economical Speed	: 10 knots
Type of Fuel	: MGO
Endurance	: 25 days

CARGO CAPACITIES

Deck Cargo	: 500 MT
Deck Strength	: 5.0 mt/m ²
Clear Deck Area	: 10M x 34M (covered 76mm thick hardwood)
Fuel Oil	: 470 m ³
Portable Drill Water	: 1040 m ³
Foam & Detergent Tank	: 11 m ³ + 11 m ³

DISCHARGE RATE

Fuel Oil	: 100 m ³ /Hr @ 60 m H
Portable Water Drill	: 100 m ³ /Hr @ 60 m H

PROPULSION SYSTEM

Main Engines	: 2 x 2320 BHPT 3606 DITA
Generator Engines	: 2 x 245 kW, CAT 3406C
Bow Thruster	: 1 x HRP 4008 TT x 5 mt thrust, 350 kW, 1800 rpm
Propellers	: 2 x CPP, Berg 2600 mm dia
Steering Gear	: Palmarine
Emergency Generator	: 1 x Caterpillar, 69 kW, 415V 3 ph, 50 Hz @ 1500 rpm

DECK EQUIPMENT

Capstan	: Zicom, 2 x 5mt @ 0.15m/min Brake Holding Load: 15 ton
Tugger Winch	: Zicom, 2 x 12mt @ 25m/min Brake Holding Load: 15 ton
Crane	: Foldable type AK40 E2, 3mt @ 9 m
Anchor Windlass	: Zicom, 9 tonnes @ 12 m/min for 36 mm chain @ 17 Shackles
Anchor	: 2 x 1440 kg Stockless bower anchor
Hydraulic Storage	: Zicom, 5 tonnes @ 20m/min @ 1st layer
Winch	: 1000m of 52mm wire Brake Holding Load: 15 ton

ACCOMMODATIONS

Crews	: 15 crews & 12 passengers
Total	: 27
All cabin fully air-conditioned	: 2 x 162 m ³ /hr x 1450 rpm, Bitzer
Walk-in freezer space	: 11.0 m ³
Walk-in Chiller	: 16.5 m ³

RADIO & NAVIGATION EQUIPMENTS

SSB	: 1 x Furuno FS-1570
SSB (additional)	:
VHF	: 2 x ICOM M45, 55 ITU, 25w
Radar	: 2 x Furuno FR-2115 & FR-1505 Mark k-3
Echo Sounder	: 1 x Furuno FE-700 6.5 inch
Gyro Compass	: 1 x Yokogawa, model CMZ 700B
GMDSS	: Furuno, FM 800S, 25w for A3
Magnetic Compass	: 1 set x Lilley & Gillie MK2000
Speed Log	: 1 x Furuno, DS-80, -10 to 40 kts
Auto Pilot	: 1 set Navitron PID. Model NT990G
Navtex Receiver	: 1 x Furuno NX-700B
GPS Navigator	: 1 x Furuno FP-90
Joystick Control System	: 1 x Kongsberg Maritime
EPIRB	: 1 x McMurdo, model E3
Fleet Broadband	: 1 set Thrane & Thrane FBB 250

LIFE SAVING & H.S.E. EQUIPMENTS

Search Lights	: 2 x 2000W Danyang Series 1900
Foodlights	: 5 x 1000 watts
Life Jackets	: 34
Liferafts	: 4 x 16 men DSB
Lifebuoys	: 9 pcs (5+2+2)
Firemen Suits	: 6 sets DOT approved
Immersion Suits	: 1 set
Scrambling Net	: 1 pc
Rescue Boat	: DSB 4201RB 6 persons c/w 25hp Outboard Motor
Slewing Devit	: D-CRM SWL 10 kN 3.5 m reach
Emergency Fire Pump	: 1 x 65 m ³ /hr @ 60 m H, Bombas Azcue

FIRE FIGHTING EQUIPMENTS

<i>External</i>	
Fire Pump(M/E Driven)	: 2x 1500 m ³ /hr, Jason Eureka
Fire Monitor	: 2 monitors (water & foam) 1200 m ³ /hr Model MM602HFJ-V-C-01
Oil Dispersant Boom	: 2 x Booms 3 m ³ /hr
<i>Internal</i>	
CO2 System	: Installed as per class requirement in Engine Room

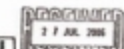
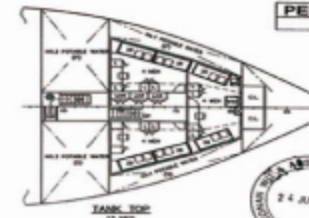
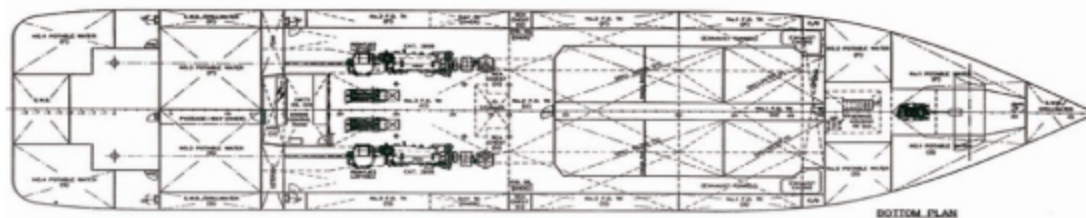
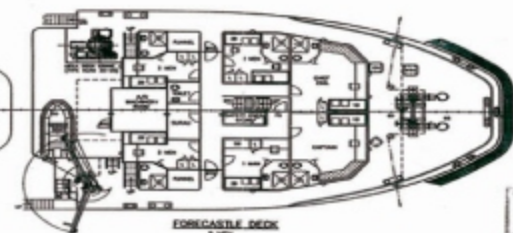
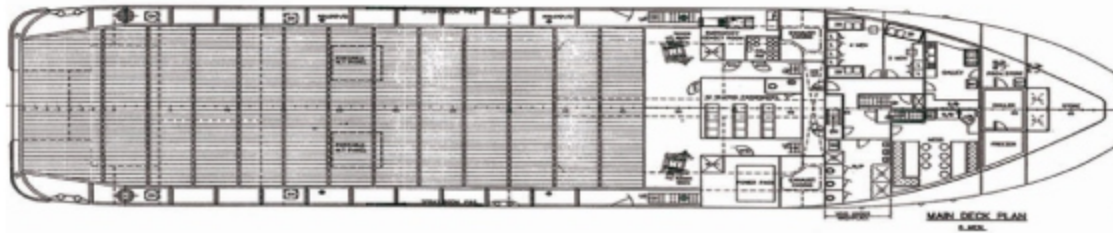
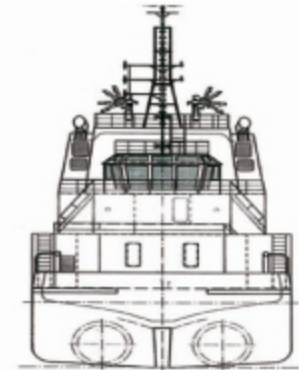
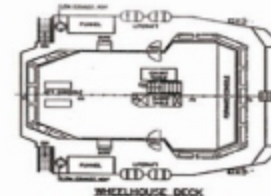
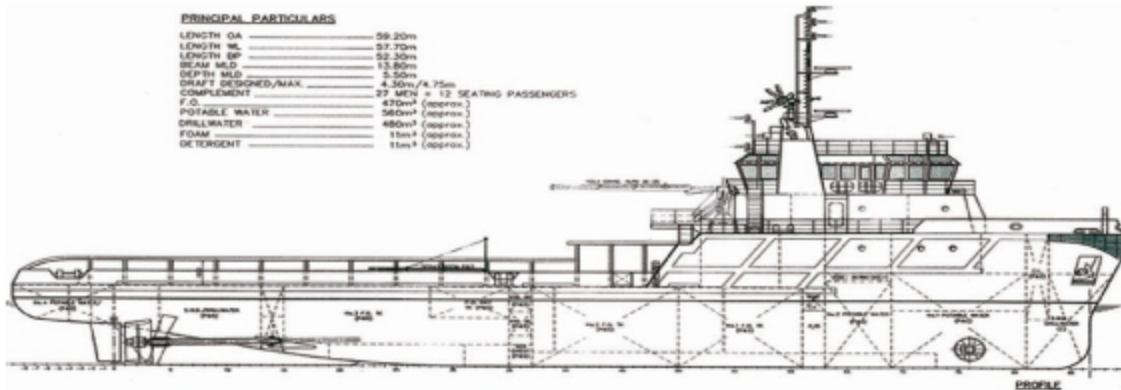
OTHERS

Refeer points	: 8 x 16 amp 415/3/50Hz, 4 pin
Unit Arc Welding & Oxy-acetylene gas	
Emergency Generator	: 1 x 75 kW, CAT C4.4 DITA @ 1500 rpm
Sewage Treatment Plant	: 1 x DVZ SKA 30 cap for 27 mens
Fuel Oil Purifier	: 1 x 2900 l/hr of MDO at 14cst/40 deg C Mitsubishi SJ10G, self cleaning
G S & Fire Pump	: 1 x 60 m ³ /hr @ 60m H, Bombas Azcue
Bilge & Ballast Pump	: 1 x 60 m ³ /hr @ 60 m H, Bombas Azcue

JM INDAH GENERAL ARRANGEMENT PLAN

PRINCIPAL PARTICULARS

LENGTH OA	59.20m
LENGTH ML	57.70m
LENGTH BP	52.30m
BEAM MLD	13.80m
DEPTH MLD	3.50m
DRAFT DESIGNED/MAX.	4.30m/4.75m
COMPLEMENT	27 MEN + 12 SEATING PASSENGERS
F.O.	420m ³ (approx.)
POTABLE WATER	580m ³ (approx.)
DRAWN WATER	480m ³ (approx.)
FOAM	15m ³ (approx.)
DETERGENT	11m ³ (approx.)



PERMIT INDAH	
MALL NO. 00042	
ISSUED AT PER 12/01/02	ISSUED BY
NAME	NO. OF
59m OFFSHORE STRAIGHT SUPPLY VESSEL	
GENERAL ARRANGEMENT	
DESIGN: JASAMERIN (M) SDN. BHD.	
SUPERVISOR: JASAMERIN (M) SDN. BHD.	
SCALE: 1:125	
DATE: 24 JUL 2002	
DRAWN BY: JASAMERIN (M) SDN. BHD.	
CHECKED BY: JASAMERIN (M) SDN. BHD.	
APPROVED BY: JASAMERIN (M) SDN. BHD.	
PROJECT NO: C3858A/G-1	