

MV JM GAGAH 2



Anchor Handling Tug Supply Vessel 60 M 5,220 BHP 74.2 MT Bollard Pull



PRINCIPAL PARTICULARS

Length Overall	: 60 m
Length W.L	: 58.74 m
Breath Molded	: 16.00 m
Depth Molded	: 5.5 m
Draft Molded	: 4.85 m
Class	: Bureau Veritas
Flag/Port Registry	: Malaysian/Port Klang
Built	: 2010
Official No.	: 334263
IMO No.	: 9585821
Call Sign	: 9MLL2
Hull No.	: 20082
Place of Built	: Mubibbah Marine Eng.

PERFORMANCE

Performance Speed	: 13 knots
Economical Speed	: 11 knots
Endurance	: 22 days

CARGO CAPACITIES

Deck Cargo	: 600 MT
Deck Strength	: 7mt/m ²
Cargo Deck Area	: 390 m ²
Portable Water Tank	: 500 m ³
Fuel Oil Tank	: 522 m ³
Drill Water / SWB Tank	: 625.90 m ³
Foam & Detergent Tank	: 10 m ³ each
Dry Bulk Tank	: 170 m ³ / 4 tanks
Liquid Mud Tank	: 177 m ³
Base Oil / Brine	: 159 m ³

DISCHARGE RATE

Fuel Oil	: 100 m ³ /Hr @ 90 m H
Portable Water Drill	: 100 m ³ /Hr @ 90 m H
Base Oil	: 100 m ³ /Hr @ 90 m H
Liquid Mud	: 2 x 90 m ³ /Hr @ 90 m H 150hp x 2900rpm for S.G. 2.0
Bulk Cement	: 13.0 m ³ /min, normal working pressure 5.6 bar
Fresh Water Maker	: 5.5 m ³ /24hrs (240 lit/hr)

PROPULSION SYSTEM

Main Engines	: 2 x 2610 BHP @ 750 rpm Yanmar 6EY26
Auxiliary Engines	: Caterpillar 34060 DITA, 2 x 245 6kw x 415 x 39H x 1500 rpm
Shaft Alternator	: Leroy Somer, 2 x LSA M50, 154 4P, 700 kW 50 Hz
Bow Thruster (Electric motor driven)	: 1 x HRP 4008 TTCP 8 mt thrust, 515 kW, 1500 rpm
Propellers	: 2 x CPP in fixed nozzle, Berg BCP 690
Gear Box	: Reintjes, LAF 2346 K41
Steering Gear	: Wagner Nufuss Steering System, WIN LA2 4.4-45-CB2
Emergency Generator	: 1 x Caterpillar, 86kW, 415V 3 ph, 50 Hz @ 1500 rpm

TOWING / ANCHOR HANDLING EQUIPMENT

Bollard Pull	: Average 74.2 MT, Max 78 MT
Towing Winch	: Double drums waterfall type, 200 MT stall pull x 1000m x 58mm wire rope
Stern Roller	: 1.8 m dia x 4.0 m length, 200 SWL
Karm Fork	: 1 set Karmory Ref: M330120 SWL 300 tons
Towing Pins	: SWL 160 MT
Storage Reel	: 1 x 5 ton @ C-20m/min

DECK EQUIPMENT

Capstan	: 2 x 6T @ 20 m/min
Tugger Winch	: 2 x 10T @ 15m/min
Anchor Windlass	: 10T @ 0-12 m/min max duty, 45mm chain
Anchor	: 2 x HHP AC14 1590kg Anchors

ACCOMMODATIONS

Complement	: 42 men
All cabin fully air-conditioned	
Walk-in freezer space	: 10.0 m ³
Walk-in Chiller	: 12.0 m ³

RADIO & NAVIGATION EQUIPMENTS

SSB	: 1 x JRC 150w MF/HF
SSB (additional)	: 1 x Furuno PS-1503 150W SSB/HF
VHF	: 2 x JRC-7705
Radar	: JRC, JMA-5312-G, 5210-G
Echo Sounder	: JRC, JFE-380
Gyro Compass	: Yokogawa CMZ 700B M 3
GMDSS	: Area 3
Magnetic Compass	: 1 x Lilley & Gillie MK2000
Speed Log	: 1 x JRC, ILN-205
Auto Pilot	: 1 x Navitron PID, NT991G MKII
Navtex Receiver	: JRC, NCR-333
GPS Navigator	: 2 x JRC, NW2-4570
Joystick	: 1 Integrated Joystick Control
EPIRB	: 1 set JME MT403FF
AIS	: 1 x JRC, IHS-182
Fleet Broadband	: 1 set Thrane & Thrane FBB 250

LIFE SAVING & H.S.E. EQUIPMENTS

Search Lights	: 2 x 2000W halogen
Floodlights	: 6 x 1000W halogen, 2 x 500W halogen
Life Jackets	: 42 + 6 men
Liferaths	: 4 x 15 men capacity
Lifebuoys	: 3 pcs SOLAS approved
Firemen Suits	: As per SOLAS requirement
Immersion Suits	: As per SOLAS requirement
Scrambling Net	: 2 pcs
Rescue Boat	: semi-rigid "Norwal" 6 person @ c/w 30 hp outboard motor
Slewing Devil	: As per SOLAS requirement

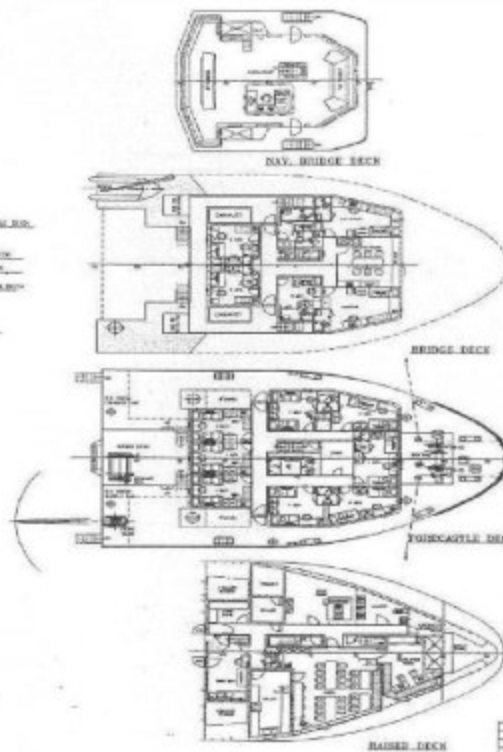
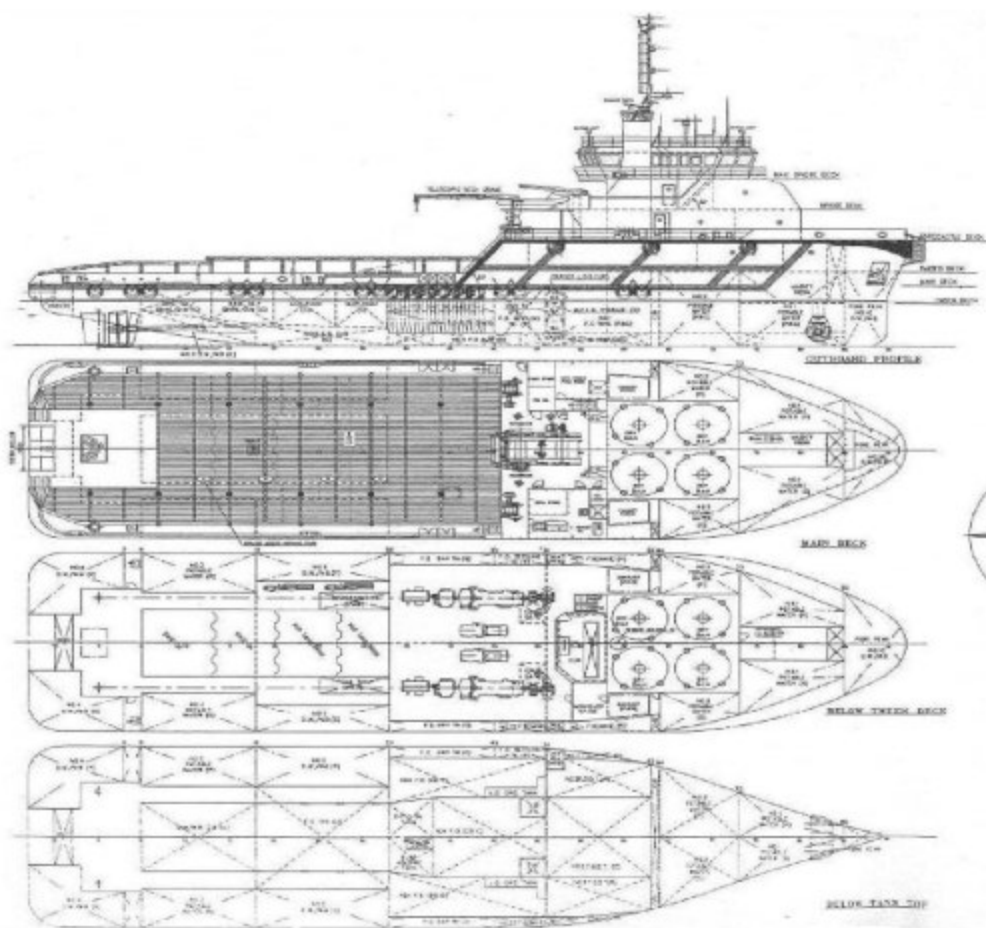
AUXILIARY MACHINERIES

G.S and Bre pump	: 1 x 60 m ³ hr @ 60 mH, 18.5 kW Bombass Azcue BA WM-EM
Bilge and Ballast	: 1 x 60 m ³ hr @ 60 mH, 18.5 kW Bombass Azcue BA WM-EM
Lub Oil Purifier	: 2 x 800 l/h, Mitsubishi Kaisha, Model S11-G self-cleaning
Sewage Treatment Plant	: DVZ, 30 men, marpol compliance
Oily Water Separator	: 1.0 m ³ , marpol compliance

OTHERS

Refer points	: 4 x 22 amp 415/3/50Hz 4 x 16 amp 240V/1/50Hz
--------------	---

JM GAGAH 2 GENERAL ARRANGEMENT PLAN



GENERAL PARTICULARS

LENGTH O/A	66.00m
LENGTH T/L	60.74m
BEAM M/D	18.50m
DEPTH M/D	5.50m
DRAFT EXHAUST/ANCH	4.30m/4.85m
GT	1150/1550
DISPLACEMENT	
CRUISING	52 MTC
SPECIAL PASSENGER	12 MTC
TOTAL	64 MTC
POTABLE WATER	800m ³ (Approx)
F.O.	520m ³ (Approx)
D.S./D.W.B.	850m ³ (Approx)
LIQUID BLD	177m ³
BASE OIL/WHE./C.W.	18m ³
FOAM	18m ³
DISPENSANT	10m ³
DRY QUIN	170m ³
DRY OIL	10m ³
WIDE HOLDING	10m ³
DECK SPACE	360m ² (Approx)
DECK CARGO	6000m ³ (Approx)

GENERAL PARTICULARS			
SHIP NAME	JM GAGAH 2	TYPE	Anchor Handling/Supply Vessel
DESIGN NO.		CLASSIFICATION	General Arrangement
DESIGNER	CONAN WU & ASSOCIATES		
DATE	2011		
SCALE	1:100		
PROJECT NO.	C-000001/1-1		