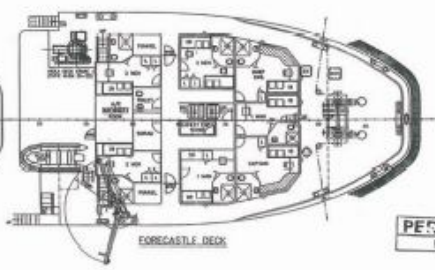
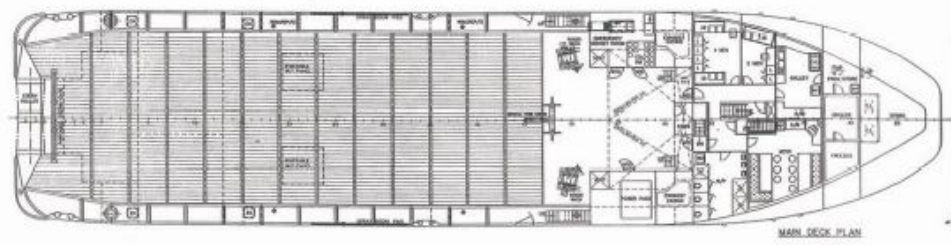
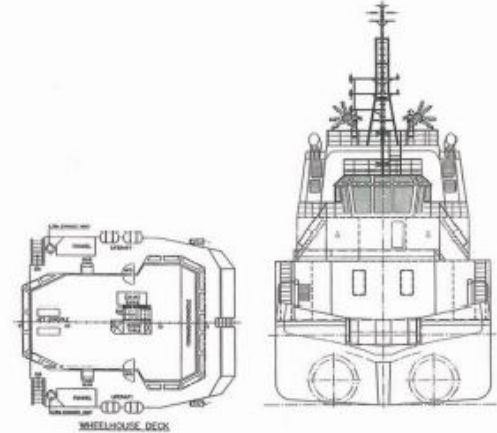
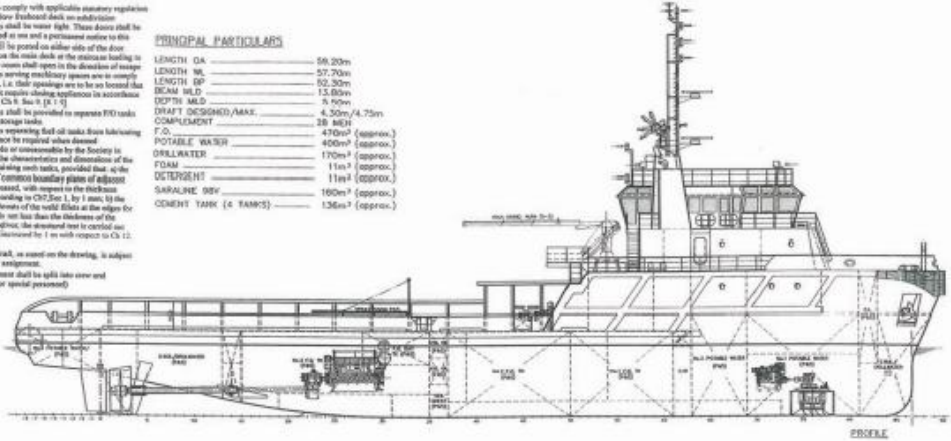


MV PERMINT AMAN

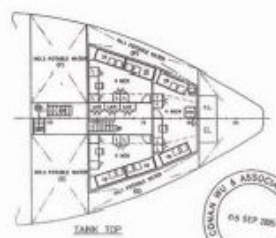
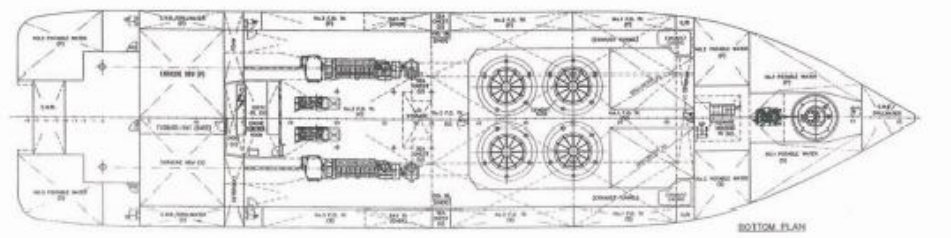
- Note:
- Vessel to comply with applicable statutory regulations.
 - Doors below finished deck as indicated. Bulkheads shall be water tight. These doors shall be kept closed at sea and a precaution notice to this effect shall be posted on either side of the door.
 - The door on the main deck at the station as loading to the engine room shall open in the direction of passage with 1:1, i.e. their openings are to be as located but they do not require closing appliances in accordance with Pt. B, Ch. 8, Sec. 9, [1 & 2].
 - Coffices shall be provided separate PFD racks from LFD storage racks.
 - Collectors representing all tanks from below-deck tanks may not be required when deemed impracticable or unnecessary by the Society in relation to the observations and dimensions of the spaces containing such tanks, provided that, at the thickness of common boundary plates of adjacent tanks is increased, with respect to the thickness obtained according to CRF, Sec. 1, by 1 mm, to the case of the strength of the hull plates at the edges for these plates is not less than the thickness of the plates throughout the unweakened part in central part with a local increase for 1 m with respect to Ch. 12, Sec. 3.5.1.
 - Minimum draft, as noted on the drawing, is subject to forward assignment.
 - The complement shall be split into crew and passengers (or special personnel).

PRINCIPAL PARTICULARS

LENGTH OA	56.20m
LENGTH WL	57.70m
LENGTH DP	62.30m
BEAM MLD	15.80m
DEPTH MLD	5.90m
DRAFT DESIGNED/AAK	4.20m/4.75m
COMPLEMENT	28 MEN
P.O.	470m ² (approx.)
POTABLE WATER	400m ³ (approx.)
DRINKING WATER	170m ³ (approx.)
FDAM	11m ³ (approx.)
DETERGENT	11m ³ (approx.)
SARALINE OILY	160m ³ (approx.)
CEMENT TANK (4 TANKS)	136m ³ (approx.)



PERMINT AMAN
HULL NO 2656



1-8-01	APPROX. TONNAGE	1000 TONNAGE	1	1
1-8-02	APPROX. TONNAGE	1000 TONNAGE	1	1
1-8-03	APPROX. TONNAGE	1000 TONNAGE	1	1
1-8-04	APPROX. TONNAGE	1000 TONNAGE	1	1
1-8-05	APPROX. TONNAGE	1000 TONNAGE	1	1
1-8-06	APPROX. TONNAGE	1000 TONNAGE	1	1
1-8-07	APPROX. TONNAGE	1000 TONNAGE	1	1
1-8-08	APPROX. TONNAGE	1000 TONNAGE	1	1
1-8-09	APPROX. TONNAGE	1000 TONNAGE	1	1
1-8-10	APPROX. TONNAGE	1000 TONNAGE	1	1
1-8-11	APPROX. TONNAGE	1000 TONNAGE	1	1
1-8-12	APPROX. TONNAGE	1000 TONNAGE	1	1
1-8-13	APPROX. TONNAGE	1000 TONNAGE	1	1
1-8-14	APPROX. TONNAGE	1000 TONNAGE	1	1
1-8-15	APPROX. TONNAGE	1000 TONNAGE	1	1
1-8-16	APPROX. TONNAGE	1000 TONNAGE	1	1
1-8-17	APPROX. TONNAGE	1000 TONNAGE	1	1
1-8-18	APPROX. TONNAGE	1000 TONNAGE	1	1
1-8-19	APPROX. TONNAGE	1000 TONNAGE	1	1
1-8-20	APPROX. TONNAGE	1000 TONNAGE	1	1
1-8-21	APPROX. TONNAGE	1000 TONNAGE	1	1
1-8-22	APPROX. TONNAGE	1000 TONNAGE	1	1
1-8-23	APPROX. TONNAGE	1000 TONNAGE	1	1
1-8-24	APPROX. TONNAGE	1000 TONNAGE	1	1
1-8-25	APPROX. TONNAGE	1000 TONNAGE	1	1
1-8-26	APPROX. TONNAGE	1000 TONNAGE	1	1
1-8-27	APPROX. TONNAGE	1000 TONNAGE	1	1
1-8-28	APPROX. TONNAGE	1000 TONNAGE	1	1
1-8-29	APPROX. TONNAGE	1000 TONNAGE	1	1
1-8-30	APPROX. TONNAGE	1000 TONNAGE	1	1
1-8-31	APPROX. TONNAGE	1000 TONNAGE	1	1
1-8-32	APPROX. TONNAGE	1000 TONNAGE	1	1
1-8-33	APPROX. TONNAGE	1000 TONNAGE	1	1
1-8-34	APPROX. TONNAGE	1000 TONNAGE	1	1
1-8-35	APPROX. TONNAGE	1000 TONNAGE	1	1
1-8-36	APPROX. TONNAGE	1000 TONNAGE	1	1
1-8-37	APPROX. TONNAGE	1000 TONNAGE	1	1
1-8-38	APPROX. TONNAGE	1000 TONNAGE	1	1
1-8-39	APPROX. TONNAGE	1000 TONNAGE	1	1
1-8-40	APPROX. TONNAGE	1000 TONNAGE	1	1
1-8-41	APPROX. TONNAGE	1000 TONNAGE	1	1
1-8-42	APPROX. TONNAGE	1000 TONNAGE	1	1
1-8-43	APPROX. TONNAGE	1000 TONNAGE	1	1
1-8-44	APPROX. TONNAGE	1000 TONNAGE	1	1
1-8-45	APPROX. TONNAGE	1000 TONNAGE	1	1
1-8-46	APPROX. TONNAGE	1000 TONNAGE	1	1
1-8-47	APPROX. TONNAGE	1000 TONNAGE	1	1
1-8-48	APPROX. TONNAGE	1000 TONNAGE	1	1
1-8-49	APPROX. TONNAGE	1000 TONNAGE	1	1
1-8-50	APPROX. TONNAGE	1000 TONNAGE	1	1
1-8-51	APPROX. TONNAGE	1000 TONNAGE	1	1
1-8-52	APPROX. TONNAGE	1000 TONNAGE	1	1
1-8-53	APPROX. TONNAGE	1000 TONNAGE	1	1
1-8-54	APPROX. TONNAGE	1000 TONNAGE	1	1
1-8-55	APPROX. TONNAGE	1000 TONNAGE	1	1
1-8-56	APPROX. TONNAGE	1000 TONNAGE	1	1
1-8-57	APPROX. TONNAGE	1000 TONNAGE	1	1
1-8-58	APPROX. TONNAGE	1000 TONNAGE	1	1
1-8-59	APPROX. TONNAGE	1000 TONNAGE	1	1
1-8-60	APPROX. TONNAGE	1000 TONNAGE	1	1
1-8-61	APPROX. TONNAGE	1000 TONNAGE	1	1
1-8-62	APPROX. TONNAGE	1000 TONNAGE	1	1
1-8-63	APPROX. TONNAGE	1000 TONNAGE	1	1
1-8-64	APPROX. TONNAGE	1000 TONNAGE	1	1
1-8-65	APPROX. TONNAGE	1000 TONNAGE	1	1
1-8-66	APPROX. TONNAGE	1000 TONNAGE	1	1
1-8-67	APPROX. TONNAGE	1000 TONNAGE	1	1
1-8-68	APPROX. TONNAGE	1000 TONNAGE	1	1
1-8-69	APPROX. TONNAGE	1000 TONNAGE	1	1
1-8-70	APPROX. TONNAGE	1000 TONNAGE	1	1
1-8-71	APPROX. TONNAGE	1000 TONNAGE	1	1
1-8-72	APPROX. TONNAGE	1000 TONNAGE	1	1
1-8-73	APPROX. TONNAGE	1000 TONNAGE	1	1
1-8-74	APPROX. TONNAGE	1000 TONNAGE	1	1
1-8-75	APPROX. TONNAGE	1000 TONNAGE	1	1
1-8-76	APPROX. TONNAGE	1000 TONNAGE	1	1
1-8-77	APPROX. TONNAGE	1000 TONNAGE	1	1
1-8-78	APPROX. TONNAGE	1000 TONNAGE	1	1
1-8-79	APPROX. TONNAGE	1000 TONNAGE	1	1
1-8-80	APPROX. TONNAGE	1000 TONNAGE	1	1
1-8-81	APPROX. TONNAGE	1000 TONNAGE	1	1
1-8-82	APPROX. TONNAGE	1000 TONNAGE	1	1
1-8-83	APPROX. TONNAGE	1000 TONNAGE	1	1
1-8-84	APPROX. TONNAGE	1000 TONNAGE	1	1
1-8-85	APPROX. TONNAGE	1000 TONNAGE	1	1
1-8-86	APPROX. TONNAGE	1000 TONNAGE	1	1
1-8-87	APPROX. TONNAGE	1000 TONNAGE	1	1
1-8-88	APPROX. TONNAGE	1000 TONNAGE	1	1
1-8-89	APPROX. TONNAGE	1000 TONNAGE	1	1
1-8-90	APPROX. TONNAGE	1000 TONNAGE	1	1
1-8-91	APPROX. TONNAGE	1000 TONNAGE	1	1
1-8-92	APPROX. TONNAGE	1000 TONNAGE	1	1
1-8-93	APPROX. TONNAGE	1000 TONNAGE	1	1
1-8-94	APPROX. TONNAGE	1000 TONNAGE	1	1
1-8-95	APPROX. TONNAGE	1000 TONNAGE	1	1
1-8-96	APPROX. TONNAGE	1000 TONNAGE	1	1
1-8-97	APPROX. TONNAGE	1000 TONNAGE	1	1
1-8-98	APPROX. TONNAGE	1000 TONNAGE	1	1
1-8-99	APPROX. TONNAGE	1000 TONNAGE	1	1
1-8-100	APPROX. TONNAGE	1000 TONNAGE	1	1